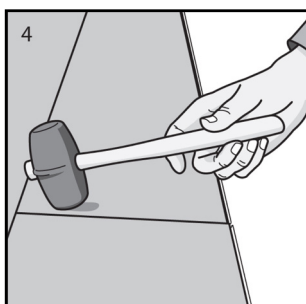
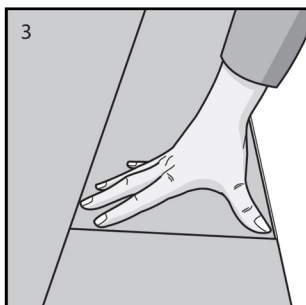
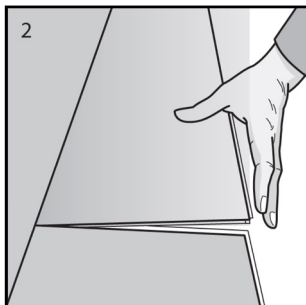
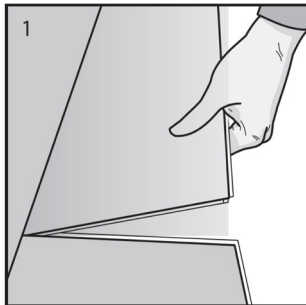




SPC – Installation Manual.



Installation Instructions



Tools needed

- Utility knife & straight edge
- Soft faced or rubber mallet
- Shears for cutting around irregular shaped objects (pipes)
- 8–10 mm spacers
- Tapping block (optional)
- Measuring tape

Planks needed to complete your project

Measure the length & width of your room. If the room has alcoves or offsets, measure these separately. This will give you the area of the room. Purchase a minimum of 10% extra to cover mistakes, trimming, and for future needs and or replacement. Most installations require about 10% overage. However this can vary depending upon the room size and layout.

HELPFUL HINT 1: For best results it is important to purchase product (cases) from the same RUN # (dye lot). Different run #'s can have shade variations. Every case of SPC Structure has the run # printed on the ends of the case. Run # example: 30.08.2009. If you do have more than one run # we highly recommend you install planks from 4 or 5 different cases from different run #'s at one time and randomly mix them into the installation as you go. This will insure a natural looking floor.

CAUTION: Do not install SPC Structure over car pet or any foam underlayment. This product is not suitable for any outside use, sunrooms/solariums, saunas, or rooms that have the potential of flooding. We also highly recommend you do not install in rooms that are not temperature controlled. Exposure to long term direct sunlight can cause damage to your floor.

Condition Strong SPC Structure prior to installation

You **MUST** store SPC Structure horizontally in the room of installation for 48 hours prior to installation. Be sure the room temperature is between 18° and 24°C. Do not remove the planks from the case during this acclimation period! Maintain this temperature during installation (2 days minimum).

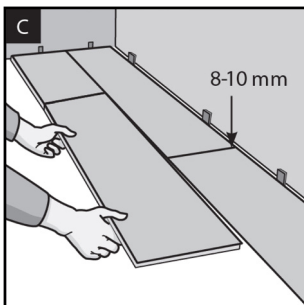
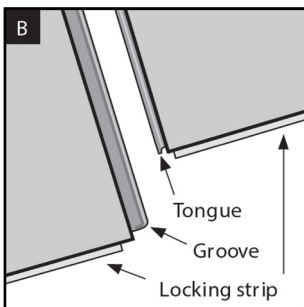
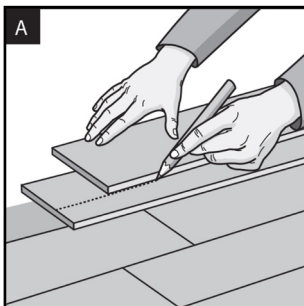
Subfloor preparation

The subfloor surface must be smooth, flat, dry, clean and solid. Carpet staples or adhesive residue must be removed to insure proper installation. Subfloors should be flat within a tolerance of 5 mm over a span of 3 meters. Any unevenness over 5 mm must be sanded down or filled with a floor leveler. Voids or humps in the subfloor will prevent SPC Structure from locking properly. Subfloors must be carefully checked for moisture problems. SPC Structure is waterproof. It is **NOT** a water-proofer. Any moisture problems need to be addressed prior to installation. New concrete floors need to cure for a minimum of 90 days.

Installation Instructions

HELPFUL HINT 2: If laying SPC Structure over existing ceramic tile, it will be necessary to skim coat the grout lines with a floor leveler. If you install SPC Structure over an existing floor that has an embossing or grout line on it, you must skim coat with a floor leveler if the embossing or grout line is greater than 3 mm. If you have old, ugly vinyl and don't want to pay for an expensive removal and remediating job, SPC Structure is the perfect answer. Any loose or damaged planks should be patched prior to installing SPC Structure over the old floor. Never sand old vinyl floors, if you think the floor may be over 20 years old.

HELPFUL HINT 3: Before laying out the floor, check the wall you are starting from and make sure it is square to the opposite wall. Simply measure the room from opposite ends of the wall to the far wall. If the measurements are different, you can make adjustments on the first row of SPC Structure by scribing the plank.



1. Lay a row of loose planks without securing them to each other first to determine if you need to adjust the length of the first plank to avoid a small piece of less than 30 cm on the opposite wall from where you started. Or, measure the length of the room and divide by 121 cm (length of one plank). If the remainder is less than 30 cm, calculate of the remainder and trim this amount of the first plank. To calculate if you need to trim the first row or last row of planks length wise, measure the room in the opposite direction (perpendicular to the row) and divide by the width of a plank (22 cm) to see the number of rows needed. We recommend the rows against the walls being not less than a 10 cm wide row. (Figure A). Adjust the first or last row accordingly. The last plank should be the same length as the first one. To cut a plank, simply measure and mark the plank, then using a straight edge and utility knife, simply score the plank and snap.

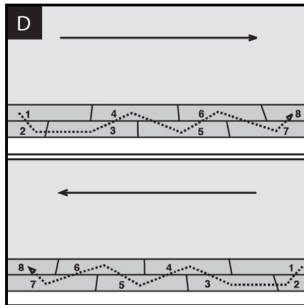
HELPFUL HINT 4:

1. When cutting SPC Structure down the length of the plank, always cut the end with the white locking strip first (Figure B). Cut through the locking strip completely with your utility knife before scoring and snapping the plank. If you damage the white locking strip, or it becomes dislodged and you cannot reinstall it into the end of the plank, you can use a small bead of instant glue in the groove of the short end of the adjoining plank.

2. SPC Structure can be installed from left to right, or right to left, starting in a corner of a room. Though you can install in both directions, we recommend installing from left to right. Select the wall from which you want the planks to run parallel. This will become your starting wall.

HELPFUL HINT 5: Install the planks parallel to the source of entering light or to the longest wall in the room. Be sure to leave to 6 mm gap around the perimeter of the room. Use spacers between the wall and the planks. The gap will be covered by your baseboard molding or quarter round (remove existing moldings prior to installation) (Figure C).

Installation Instructions

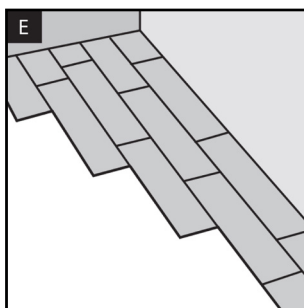


3. Installations from left to right are recommended whenever possible. It is easier to lock in the long sides from this direction. For installations from left to right (recommended), the white locking strip should be on the left side of the planks. For installs from right to left, the white locking strip will be on the right side of the planks. For both installations, you will install the first and second row at one time. You must install the planks in a staggered method and in the sequence of planks as shown in Figure D. Be sure to stagger the planks so the seams are staggered by at least 20 cm.

4. When starting your first two rows, lock planks #1 & #2 (Note plank #2 has been cut shorter in length) in place by angling the plank's tongue and groove at an angle just enough to get your fingers underneath the plank. Angling the planks any higher makes it hard to get a good tight seam. You will know when the planks are fully locked when the planks lay flat on the subfloor. Using a tapping block on the long side of the planks helps to fully tighten the seams and make a square installation. Never use a tapping block on the white locking strip on the short side of the planks. **DO NOT REMOVE THE WHITE LOCKING STRIP.** Note, your first plank on the first row can be a full sized plank or cut to desired length depending upon your room measurements.

HELPFUL HINT 6: When cutting a plank of SPC Structure to start a row. You will need to cut off the end with the white locking strip for both left to right or right to left installations. The remaining piece can then be used on the opposite side of the room, at the end of that row if layout permits.

5. When connecting both a long seam and a short seam together (plank #3 to #1 & #2), connect the long side of plank #3 to #1 and slide the short side of plank #3 up flush to the short side of plank #2. Press from the inside first, and tap into place on the seam with a mallet. Be sure to make contact on the seam hitting both planks. Tap from the insider corner where the three planks meet out to the opposite side. Run your finger over the seam to make sure the two ends of the planks are level with no high spots. Using your fingers, if you can lift up the plank you just installed, the locking mechanism is not fully engaged. Tap as needed until fully locked in place.



6. Now install planks #4, 5 & 6 in the same method as described in step #5 and continue this method for the remainder of your 1st and 2nd rows. The remainder of the installation is one row at a time in the direction you are installing the floor. However, when there is more than one person installing the floor, you can start multiple rows at one time in a stair step method (Figure E).

7. Fitting around irregular objects is no problem. Simply make a pattern out of heavy paper to fit around pipes or irregular objects. Place the pattern upon the plank and trace. Cut along trace lines using a utility knife or heavy duty scissors, and lay plank. Be sure to leave a 8–10 mm expansion space around all fixed objects, floor vents and door frames.

8. When coming to a door way, we recommend the use of T-moldings to separate rooms and hallways. Be sure to leave a 8–10 mm expansion space under the T-moldings.

IMPORTANT NOTE: Install SPC Structure at room temperature. Please make sure your thermostat is set above 18°C to 24°C when installing SPC Structure. Room temperature is important!

INSTALLATION SPECIFICATIONS

Connection Type	I4F Locking End Joints (Click).
Free Floating Floor	Yes. DO NOT screw or nail moldings, transitions, cabinetry or vents through ANY SPC Structure flooring.
Acclimation Period	48 hours minimum required in room prior to installation.
Temperature Range	18°C to 24°C required in room of installation. After installation temps should stay between 18°C to 24°C.
Interior Product Only	Yes. See limitations/exclusions below.
Storage	Horizontally.
Dye Lots	Yes. Install from a minimum of 3 to 4 different boxes and dye lots at one time. See page 3 of Owner's Manual for More information.
Expansion Space	Yes. For room perimeters and fixed objects please leave 8–10 mm optimum space.
Floor Flatness Tolerances	5 mm over 3 m, Use floor leveler when exceeding tolerance.
Special Tools Required	Yes. Utility knife and straight edge, measuring tape, soft faced or rubber mallet (to tap and lock plank seams), shears, 8–10 mm spacers and optional tapping block.
Hand Roller Required	No.
75 lb min. Floor Roller	No.
Moisture Reading Guidelines; OVER CONCRETE Scale 0 to 5% Scale 5% to 6%	Based on Tramex Concrete Moisture Encounter Plus Meter (scale 0 to 6%). No moisture barrier. 6 mil poly barrier necessary; over 6% recommend Dricore.
Moisture Reading Guidelines; OVER WOOD Scale 0 to 13%	Never use 6 mil poly over wooden subfloors. OK to install. Do not install above 13% moisture levels
Primer Over Wooden Subfloors	No, use mat or PU underlay to decouple reverse expansion behavior.
Basement Proofer over Concrete	No.
Moisture Barrier (6 mil poly)	Yes above 5% only.
Installs Over Radi ant Flooring	Yes. Hydronic approved — Electric is not approved.
Suspended Wood Floors	Yes. 40 cm minimum well ventilated crawl space. Use moisture barrier over ground/dirt. Especially for mobile home installations.
Foam/Cushioned Underlayment	No. Voids warranty if used in any application.

INSTALLATION SPECIFICATIONS

Approved Subfloors	Must be smooth, solid, dry and no deflection.
Wood	Yes. Solid, engineered, parquet.
Plywood	Yes. OSB & particleboard are approved for SPC Structure products (provided boards are fixed to subfloor).
Vinyl	Yes, install over 1 layer of only linoleum, VCT, LVT, peel & stick.
Concrete	Yes. Sealed, unsealed, poured in place gypsum. On grade or below grade (see moisture guidelines).
Tile (Stone)	Yes. Ceramic, Terrazzo, stone tile (grout lines of less than 2 mm is optimum).
Dricore	Yes.
Subfloors	Not Approved Carpet (any type), foam underlayment, cushioned back vinyl, rubber, cork, laminates.
Limitations/Exclusions	These types of installations will NOT be covered under warranty: All exterior installations & seasonal porches, boats/campers /RV's, sunrooms/solariums, non-temperature controlled rooms or homes and other rooms with direct sunlight.
Steam Cleaner	DO NOT USE!
Vertical Surfaces & Staircases	Not covered under warranty. Can be done using high quality construction adhesive. Product not intended for this usage.
Limited Warranties	15 years residential, 5-year commercial.

Ahmadabad:

Surface Plus, GF, 4th Floor
Premier House, Opp. Gurudwara
Thaltej Crossing, Ahmadabad – 382 454
Tel: +91 79 4006 0521 / 79 2685 3312
Email: ahmadabad@squarefoot.co.in

Bengaluru:

#51, 1st Floor, 100 Feet Road
4th Block, Koramangala
Bengaluru – 560 034
Tel: +91 80 4110 1012 / 13
Fax: +91 80 2563 3145
Email: bangalore@squarefoot.co.in

Chennai:

#96, 3rd Floor, Opp. Vani Mahal
G. N. Chetty Road, T. Nagar
Chennai – 600 017
Tel: +91 44 4550 8411 / 12
Email: chennai@squarefoot.co.in

Goa:

605, 6th Floor, Gera Imperium
1st Building, Behind KTC Bus Stand
Patto Plaza, Panjim, Goa – 403 001
Tel: +91 832 243 7663
Email: goa@squarefoot.co.in

Hyderabad:

6 – 3 – 354/1, 2nd Floor, Stellar Sphinx
Panjagutta Main Road, Road No. 1
Banjara Hills, Hyderabad – 500 034
Tel: +91 40 4003 7212 / 13
Fax: +91 40 4003 7214
Email: hyderabad@squarefoot.co.in

Indore:

154, 1st Floor Orbit Mall, A.B. Road
Indore – 452 001
Tel: +91 731 498 1983
Email: indore@squarefoot.co.in

Jaipur:

2nd Floor, Plot No. 287, Vaishali Marg
Gomes Defence Colony, Opp. Ktl Maruti Showroom
Near Big Bazaar, Jaipur, Rajasthan – 302 021
Tel: +91 141 492 2396
Email: jaipur@squarefoot.co.in

Kochi:

2nd Floor Chakrampilly Estate
NH Bypass, Palarivattom
Thammanam PO, Cochin
Kerala – 682 032. (Opp: Holiday Inn)
Tel: +91 484 485 6173
Email: kochi@squarefoot.co.in

Kolkata:

34, Dr. Sarat Banerjee Road
BSNL Telephone Exchange Lane
Police Station Rabindra Sarobar
Kolkata – 700 029
Tel: +91 33 4060 4243
Email: kolkata@squarefoot.co.in

Mumbai:

9–11 Senapati Bapat Marg
Lower Parel, Mumbai – 400 013
Tel: +91 22 4047 6211
Fax: +91 22 2497 6216

New Delhi:

A–31, Ground Floor
FIEE Complex, Okhla Phase–II
New Delhi – 110 020
Tel: +91 11 4052 5767 / 11 4050 4785
Email: delhi@squarefoot.co.in

Pune:

Classic Floorings & Interiors Pvt Ltd,
Office No. 201, 2nd Floor, Gagan Capital
Dhole Patil Road
Beside Ruby Hall Clinic Exit Gate
Landmark – Above Anna Idly & CCD
Pune – 411 001
Tel: +91 20 4000 1630
Email: pune@squarefoot.co.in

Area Representatives

Bhopal	+91 82913 17558
Bhubaneswar	+91 96742 23380
Coimbatore	+91 90032 56718
Guwahati	+91 96749 93005
Nasik	+91 86575 03355
Patna	+91 98363 11556
Surat	+91 97237 77887

**Head Office:**

Classic Floorings & Interiors (P) Ltd., Ground Floor, Raghuvanshi Mansion
Raghuvanshi Mills Compound, 9–11 Senapati Bapat Marg, Lower Parel, Mumbai – 400 013. Tel: +91 22 4047 6211 | Fax: +91 22 2497 6216