

Standard Plus 1.5 – Installation Guide.



# Installation Guide

## Conditions

Floating installation means that the wood floor is not attached (i.e. with nails or adhesive) to the subfloor. The subfloor must be level, sound, dry and clean and must meet the relevant standards applicable to the country in question.

The floor must be free to move with changes in indoor climate. It must not be locked by heavier objects, such as kitchen interiors, fireplaces or heavy cabinets.

The relative air humidity (RH) must be between 30% and 60% and the temperature must be at least 18°C before, during and after installation. As moisture may appear in a new building, the room should be heated and aired in good time before installation, so that the right indoor climate is achieved.

For concrete subfloor, cement screeds can't have more than 2% of concrete moisture (CM) for floors without heating and not more than 1,8% (CM) for floors with heating.

Wooden floors from Tarkett should be stored under the same climatic conditions as above and not directly on/against concrete. The packs must not be opened until immediately before installation.

## Tools

In addition to traditional tools such as a hammer, handsaw, jigsaw or circular saw, ruler, try square, pen, drill and chisel, we recommend using our Tarktool and a Tarkett tapping block. The tapping block protects the edges of the boards when tapping them together – never use a cut bit of board as a tapping block, as this will chip the edges. The Tarktool, Tarkett's pull bar, makes it easier to get the last row of boards in place. Cut the boards in such a way that you don't get spliterly edges.

## Damp proof membrane

Always apply a damp proof membrane where moisture may rise from the subfloor and always when the subfloor is concrete on earth, a light concrete floor, floors over damp and warm rooms (laundry room, boiler room, etc.), floors with embedded or loose heating pipes and on floors over crawl spaces.

The damp proof membrane must consist of long-lasting polythene sheeting (at least 0.2 mm thick), or a combined damp proof membrane/cellfoam such as Tarkoflex II with the required durability and moisture resistance. The damp proof membrane is laid with an overlap of at least 200 mm.

In extreme humidity in subfloor, we recommend a ventilated damp proof membrane. This can also be combined with mechanical ventilation.

When installing products thinner than 13 mm on this type of underlay, a load-distributing board (e.g. fibreboard, plywood or chipboard, min thickness 6 mm) must be installed over the underlay, with flooring paper on top as an intermediate layer.

## Expansion gap

Wood is a living material, which means that a floating wood floor will expand or contract, despite the multilayer construction design, depending on how the indoor climate changes through the year.

Therefore, you must leave a space (called an expansion gap) of at least 1.5 mm per metre width of floor, minimum 8–10 mm, between floor and wall around the whole room. This also applies between the floor and thresholds, pipes, steps, pillars, fireplaces, stone floors, etc. The expansion gap is hidden using skirting or edging.

### Maximum installation area

“Pure” (rectangular) areas can generally be covered with boards as a single unit up to 240 m<sup>2</sup> without any problem. However, the max floor width is 12m and the length is 20 m. Larger areas need to be divided by expansion gaps. Maximum surface for floating installation of 22 mm flooring is 30 m<sup>2</sup>. Note that in corridors the boards must always be installed along the length of the corridor. Also note that heavy furnitures can lock the floor.

### Planning installation

Installation direction: If the room is fairly square, the length of the boards should run parallel to the incoming light. In long, narrow rooms it is best to install the boards along the length of the room due to the movement of the wood (see below under EXPANSION GAP). Measure the room. If the last row of boards will be narrower than 5 cm or if the wall is not straight, the first row of boards should be cut.

If there is a box with START & STOP label, it is highly recommended to begin the installation from this box which includes a board divided into two pieces. The first row should be started with the START part. The STOP part can be used at the end of a row and, if needed, cut to correct size.

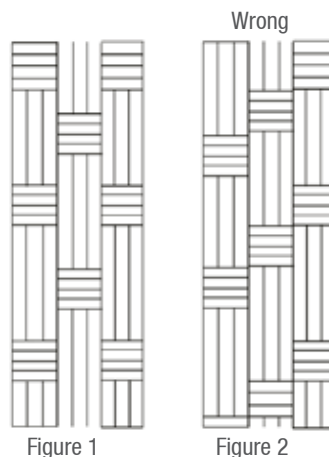
**Installing plank:** The wear layer of plank comprises one large strip of wood and colour differences between boards do occur. Even minor differences in shade between neighbouring boards may be perceived as disturbing.

Therefore, when installing plank flooring, the boards should be sorted. Open a few packs and create a gradual colour transition. This prohibits the lightest boards being placed next to the darkest.

Installing Noble collection: As there are different patterns in Noble product range, please check the pattern before installaton.

1. Basketweave must always be installed in the Dutch pattern (see fig. 1) and never with diagonal corners touching (see fig. 2 – wrong).

2. Boards with block pattern should be installed so that the blocks are set alternately. As this is hand made pattern some irregularity can occur. Please check the pattern of the adjacent board and move the entire row if necessary so that the pattern of both rows are as consistent as possible.



General: In more complicated areas, for example where a corridor is to be floored along with rooms on both sides, or rooms in a row with door openings or arches between, the floor may buckle over considerably smaller areas than is stated above. In such cases you shall lay the floors in several, independent squares/rectangles with expansion gaps between. If all the areas need to be installed as a single floor without any gaps, the boards can be glued to the subfloor (see separate instructions). This method minimises movement in the wood floor and should also be used when installing patterns, with boards laid in different directions, or in other cases which may cause irregular movement of the floor.

In corridors the floor should always be installed lengthwise. Make sure during installation that all the short ends joins of the boards are staggered from the short end joins of the next row by at least 50 cm for boards longer than 1250 mm and at least 30 cm for boards shorter or equal to 1250 mm (e.g. Viva).

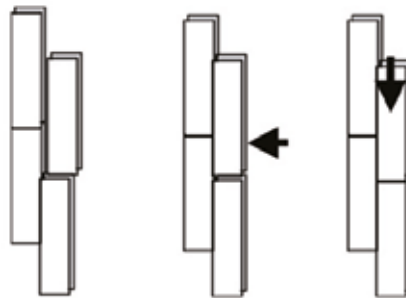
### Ultraloc

When tapping boards together, it is important to use Tarkett's tapping block so as not to damage the tongue. Strike the tapping block with a hammer, preferably a heavy hammer, as one hard tap is better than many small ones.

For simplest installation – follow the order below:

\* **Ultraloc with HDF middle layer:** First tap together the long side and then the short end (fig. 1)

Figure 1



### 2–Lock

2–lock are angled locking systems, with the boards joined by angling in and pressing down into the profile of the previous board.

### Different types of subfloors

The subfloor must be level, firm, clean and dry, and comply with relevant national standards.

Place the level on the floor to determine the substrate evenness. The gap shouldn't be more than 3 mm on 2 meters measured length and 1,2 mm /25cm, both must be fulfilled.

**Cellar floor or concrete floor:** Use self levelling compound to even the substrate.

**Old wood floor:** Check that the subfloor is sound, level, free from rot and squeaks. Fill or sand down major irregularities. Fill minor irregularities with flooring paper. Then lay ragfelt as an underlay. Install the new boards at 90° to the old ones.

**Particle board:** Similar to the previous section. Direction of boards as in "Planning installation".

**Hard or soft sheet flooring:** Wood floors can be laid directly onto vinyl floors, linoleum floors, needle felt and thin, tight-looped carpet. Use ragfelt or Tarkofoam II as an underlay over linoleum and hard vinyl floors. Consult your local dealer.

**EPS, cellular plastic foam / 13, 14, 22 mm wood floors in domestic areas:** Can be installed over cellular plastic insulation with a compression strength of at least 150 kN/m<sup>2</sup>. The sheets should be secured and laid at 90° to the length of the floor boards. Any damp proof membrane must be laid under the EPS sheets. Use ragfelt as an underlay.

**EPS, cellular plastic foam / Wood floors thinner than 13 mm in domestic areas:** A load-distributing board (e.g. fibreboard, plywood or chipboard, min thickness 6 mm) must be installed over the cellular plastic foam.

Any damp proof membrane must be laid on the EPS sheets. Use ragfelt as an intermediate layer over load-distributing boards.

### Underfloor heating

The heating system must be designed so that it provides even heat over the whole area of the floor and must never exceed 27°C in any part of the floor. This also applies under carpets, cupboards, etc. This requires a self-limiting electrical or correctly designed water-borne underfloor heating system. At the short end (fig. 1)

damp proof membrane must always be laid if there is underfloor heating. When the heat passes through the wood floor, it dries out more than usual, possibly causing small gaps to arise during the heating period.

The boards should be placed perpendicular to the coils. If the underfloor heating has been turned off during installation it must be started slowly and gradually.

Beech and Maple move more than other woods and are not recommended for use with underfloor heating.

For more information see general guidelines for underfloor heating. Published by the Swedish Flooring Trade Association.

### Protection

Protect the wood flooring if building work is to continue after the flooring is laid. The protective material must allow moisture to pass through and must not discolour the completed flooring.

**Tape must not be stuck directly to the wood floor.**

### Important information for THE INSTALLER

The nature of wood results in variations in the color and structure of individual planks. To get the best of your installation, open a few packages during installation to discover how you best can match the differences to create an harmonious colour rendering.

All the components of this parquet have been thoroughly checked throughout our manufacturing process. The surface has been checked particularly carefully, and has been graded according to our specifications. However, if you discover a board that does not match the other boards, please do not install it\*. After we have checked it, we will replace the defective board.

Please note that if a defective board is installed. Tarkett is not liable for the end result. We are liable only for the cost of the defective board.

\* Contact your supplier.

### Maintenance

See separate instructions (available at [tarkett.com](http://tarkett.com)).





## 2-LOCK



**1**

Before installing the first row, the part of the groove profile which sticks out must be cut off.



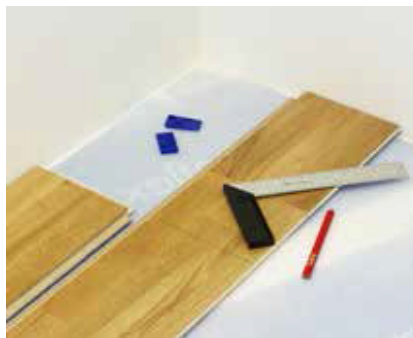
**2**

First row. Remember that the floorboards should preferably run along the length of the room. Start in a left-hand corner with the groove side against the wall and work towards the right. The next board is angled down into the short end of the previous board so that it slides into place. Press spacers between the floor and the wall to create an expansion gap of 8–10 mm, after approx. 3 rows is recommended.



**3**

Second plank, first row. Place it gently and tight to the short end of the first one. Fold the panel down in a single action movement. During the fold down, make sure the panels are tight against each other. Afterwards press or slightly knock at the short end just installed.



**4**

At the end of the row, turn the last board so that it lies tongue to tongue. Push the short end tightly against the wall. Mark where to cut with a pencil 8–10 mm from the previous board's short end to give you an expansion gap when the board is tapped into place.



**5**

First plank, second row. Start with the rest of the cut board from the first row. Ensure that all the short end joints are staggered from the short end joints of the other row by at least 50 cm.



**6**

Second plank, second row. Place the panel gently and tight to the short end of the previous panel.



**7**

Fold the panel down in a single action movement with a slight press to the short end of the previous panel. During the fold down, make sure the panels are tight against each other.



**8**

Final row: When you get to the final row, it is possible that the boards will not fit width wise. In this case, place the final board with the tongue facing the wall, on top of and edge to edge with the last board. Place a spare bit on top, after 5 mm of the profile has been sawn off, and measure the gap by running the bit of board along the wall. Mark with a pencil where to cut the final board. If the final row of boards has not been cut, the tongue must be sawn off in order to keep an expansion gap.



**9**

If there is no room to fold down the last board, it can be slide in from the side instead. In order to do this, the tongue of the board in the previous row has to be made level. Use a chisel to shave off the part of the tongue which raises like a bump along the top of the outside edge.



**10**

Place a thin bead of Tarkett's D3 adhesive along the top edge of the modified tongue.





**11**

Then tap the board sideways with a pull bar. Finish by placing spacers in the expansion gap between floor and wall. Now that the floor has been installed, skirtings and any joining strips can be fitted but don't forget to remove all the spacers.



**12**

If the long side of the board meets a pipe: Drill a hole with a diameter min. 16 mm greater than the pipe diameter to give an expansion gap around the pipe. Mark with a pencil where to saw. Saw off the bit which will fit behind the pipes, closest to the wall. Cut at an angle as shown in the picture. If the pipes are located along the short side of the floor, cut the board at a 90° angle straight through the holes.



**13**

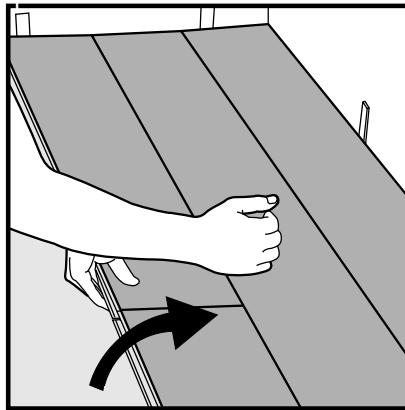
Tap the board in position, glue the loose piece in place, fit a spacer against the wall and cover with pipe collars.



**14**

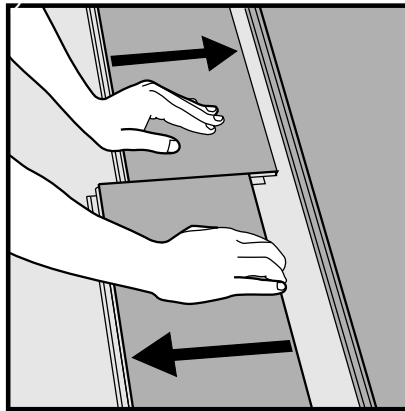
Doorframes can be removed and moved up, but it is usually easier to saw them off. Use a loose floorboard as a height template and saw the frame with a fine-toothed saw. Push the floor under the frame. Ensure that the floor is not wedged between the subfloor and the frame.

## Disassembling (without tools)



**1**

Separate the whole row by carefully lifting up and slightly knocking just above the joint. Fold up and release the whole longside.



**2**

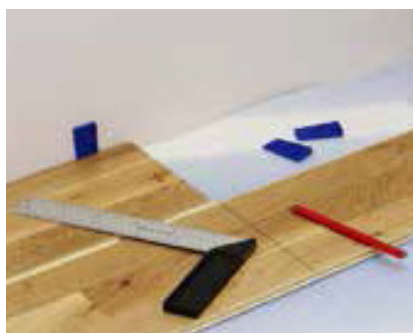
Disassemble the panels by sliding horizontally. (Do not fold up.)

## Ultraloc / T&G



**1**

First row. Remember that the floorboards should preferably run along the length of the room. Start in a left-hand corner with the groove side against the wall and work towards the right. If the wall isn't straight, cut lengthwise. Place the tapping block against the short end of the board and tap the boards together with a hammer. Press spacers between the floor and the wall to create an expansion gap of 8–10 mm.



**2**

At the end of the row, turn the last board so that it lies tongue to tongue. Push the short end tightly against the wall. Mark where to cut with a pencil 8–10 mm from the previous board's short end to give you an expansion gap when the board is tapped into place.



**3**

Cut the board where you marked. Angle it into place and tap it in with the pull bar. Place a spacer between the short end and the wall.



**4**

Start the second row with the rest of the cut board. Ensure that all the short end joints are staggered from the short end joints of the other row by at least 50 cm for boards longer than 1250 and at least 30 cm for boards shorter or equal to 1250 (e.g. Viva).



**5**

Viva Ultraloc, which has a middle layer of HDF, is tapped together along the long side first. Then tap the short ends together. For other Ultraloc boards the short ends are tapped together first, followed by the long side, starting with the free end. The long side groove must be placed against the tongue for this.



**6**

Continue installing the subsequent rows in the same way until you reach the final row. Always start a new row with the rest of the cut board from the end of the previous row. Use a hammer and Tarkett's installation tools: tapping block and pull bar. Do not tap the boards together with excessive force. This and/or using the wrong tools will cause chipped edges.



**7**

Final row: When you get to the final row, it is possible that the boards will not fit width wise. In this case, place the final board with the tongue facing the wall, on top of and edge to edge with the lastbut-one board. Place a spare bit of board on top and measure the gap by running the bit of board along the wall and marking with a pencil where to cut the final board.



**8**

Tap in the sawn board using the pull bar. If the final row of boards has not been cut, the tongue must be sawn off in order to keep an expansion gap. If installing T & G place spacers along the final row of boards too. Now that the floor has been installed, skirtings and any joining strips can be fitted but don't forget to remove all the spacers.



**9**

Boards with Tongue & Groove should be point bonded. That is a generous line of glue, about 10 cm long, placed in the groove with a halfmeter intervals. The groove in the short end should be glued all the way.



**10**

Continue installing the subsequent rows in the same way until you reach the final row. Always start a new row with the rest of the cut board from the end of the previous row. Use a hammer and Tarkett's installation tools: tapping block and pull bar. Do not tap the boards together with excessive force. This and/or using the wrong tools will cause chipped edges.



**11**

Tap the board in position, glue the loose piece in place, fit a spacer against the wall and cover with pipe collars



**12**

Doorframes can be removed and moved up, but it is usually easier to saw them off. Use a loose floorboard as a height template and saw the frame with a fine-toothed saw. Push the floor under the frame. Ensure that the floor is not wedged between the subfloor and the frame.

**Ahmadabad:**

Surface Plus, GF, 4th Floor  
Premier House, Opp. Gurudwara  
Thaltej Crossing, Ahmadabad – 382 454  
Tel: +91 79 4006 0521 / 79 2685 3312  
Email: ahmadabad@squarefoot.co.in

**Bengaluru:**

#51, 1st Floor, 100 Feet Road  
4th Block, Koramangala  
Bengaluru – 560 034  
Tel: +91 80 4110 1012 / 13  
Fax: +91 80 2563 3145  
Email: bangalore@squarefoot.co.in

**Chennai:**

#96, 3rd Floor, Opp. Vani Mahal  
G. N. Chetty Road, T. Nagar  
Chennai – 600 017  
Tel: +91 44 4550 8411 / 12  
Email: chennai@squarefoot.co.in

**Goa:**

403, 4th Floor, Gera Imperium  
1st Building, Behind KTC Bus Stand  
Patto Plaza, Panjim, Goa – 403 001  
Tel: +91 832 243 7663  
Email: goa@squarefoot.co.in

**Hyderabad:**

6 – 3 – 354/1, 2nd Floor, Stellar Sphinx  
Panjagutta Main Road, Road No. 1  
Banjara Hills, Hyderabad – 500 034  
Tel: +91 40 4003 7212 / 13  
Fax: +91 40 4003 7214  
Email: hyderabad@squarefoot.co.in

**Indore:**

154, 1st Floor Orbit Mall, A.B. Road  
Indore – 452 001  
Tel: +91 731 498 1983  
Email: indore@squarefoot.co.in

**Jaipur:**

2nd Floor, Plot No. 287, Vaishali Marg  
Gomes Defence Colony, Opp. Ktl Maruti Showroom  
Near Big Bazaar, Jaipur, Rajasthan – 302 021  
Tel: +91 141 492 2396  
Email: jaipur@squarefoot.co.in

**Kochi:**

2nd Floor Chakrampilly Estate  
NH Bypass, Palarivattom  
Thammanam PO, Cochin  
Kerala – 682 032. (Opp: Holiday Inn)  
Tel: +91 484 485 6173  
Email: kochi@squarefoot.co.in

**Kolkata:**

#332, Homeland Mall  
18B, Ashuthosh Mukherjee Road  
Kolkata – 700 020  
Tel: +91 33 2455 4344  
Email: kolkata@squarefoot.co.in

**Mumbai:**

9–11 Senapati Bapat Marg  
Lower Parel, Mumbai – 400 013  
Tel: +91 22 4047 6211  
Fax: +91 22 2497 6216

**New Delhi:**

M – 56, 2nd Floor, M–Block Market  
Greater Kailash Part II  
New Delhi – 110 048  
Tel: +91 11 4052 5767 / 11 4050 4785  
Email: delhi@squarefoot.co.in

**Pune:**

Classic Floorings & Interiors Pvt Ltd,  
Office No. 201, 2nd Floor, Gagan Capital  
Dhole Patil Road, Beside Ruby hall Clinic Exit Gate,  
Landmark – Above Anna Idly & CCD  
Pune – 411 001  
Tel: +91 20 4000 1630  
Email: pune@squarefoot.co.in

**Area Representatives**

Bhopal	+91 82913 17558
Bhubaneshwar	+91 96742 23380
Coimbatore	+91 90032 56718
Guwahati	+91 96749 93005
Nasik	+91 86575 03355
Patna	+91 98363 11556
Surat	+91 97237 77887

**Head Office:**

Classic Floorings & Interiors (P) Ltd., Ground Floor, Raghuvanshi Mansion  
Raghuvanshi Mills Compound, 9–11 Senapati Bapat Marg, Lower Parel, Mumbai – 400 013. Tel: +91 22 4047 6211 | Fax: +91 22 2497 6216

Toll Free: 1800 226 211 ■ sales@squarefoot.co.in ■ www.squarefoot.co.in